

Garden Flat with Beach Access

Region: Languedoc | La Grande Motte

Sleeps: 4 **Bedrooms:** 1



Overview

Holiday apartment of contemporary design with private garden and direct access to the beach. This flat has its own private entrance at the back, leading to a quiet and green patio area. This brand new holiday apartment has been entirely decorated by an interior designer and has air-conditioning.

Description

This rare apartment would make a fantastic destination for a family of three or four people. It opens directly on to the glorious sands of the Languedoc but also has its own small garden. Contemporary designed holiday apartment with private garden and direct access to the beach. This flat has its own private entrance at the back, leading to a quiet and green patio area. This brand new holiday apartment has been entirely decorated by an interior designer, has air conditioning and a well-equipped kitchen and contemporary designed bathroom. Located on the East side of La Grande Motte, or so called Levant side, the area is very quiet but nevertheless very close to the center of the village, 800 meters. Local shops, including a newsagent, boulangerie, pharmacy, grocery are just 5mins walk so a car is not necessary. It is conveniently located 15 minutes drive from Montpellier Airport and 20 mins from Montpellier's city centre. Montpellier and its region offer fantastic tourist attractions, with its Music, Dance and Theatre Festivals, also its vineyards and gastronomy. There is a wide selection of beautiful country walks, but also cultural sites such as Saint Guilhem le Desert village, the Basilica of Maguelonne, or the Pont du Gard to name just a few.

Garden Flat with Beach Access

Region: Languedoc | La Grande Motte

Sleeps: 4 **Bedrooms:** 1

Layout

Bedroom: Double bed.

Comfortable sofa-bed in living room.

Bathroom: Shower, toilet.

Separate WC.

Kitchen equipped with: Coffee Maker, Dishes & Utensils, Dishwasher, Microwave, Refrigerator, Hob, Toaster.

The apartment is on the ground floor with direct access to the garden terrace and to the beach. The sofa bed in the living room is a very comfortable sofa bed that can sleep two people.

More Info

Also included in apartment: Air Conditioning, Hair Dryer, Heating, Internet, Iron & Board, Linens and towels provided, washing machine

Parking.

The apartment is situated in the resort of La Grande Motte, just 15 minutes from Montpellier centre. La Grande Motte is a popular seaside town with many water-based activities on offer. This apartment is rare in that it has immediate access to the beach without the need for walking or driving any distance to get there.

The apartment is located on the east side of La Grande Motte, or so called "Levant" side. The area is very quiet but nevertheless less than 5 minutes walk to the centre of the village with its shops and restaurants, rendering a car unnecessary.

Montpellier, with its aquarium, cinemas, museums, shops, restaurants, cafés, bars and general 'joie de vivre' is only 15 minutes away. Regular bus services can take you into town.

Aigues Mortes, the medieval town founded on the commerce in salt, is about 10 minutes away in the other direction and is the entrance to the Camargue National Park where you can see pink flamingoes, black bulls and white horses.

Features

- Internet
- Satellite TV
- Easy walk to beach (<15 mins)
- Easy walk to shops (<15 mins)
- Private parking
- Golf nearby
- Watersports nearby
- Secure parking
- Family friendly
- Barbecue
- Terrace
- No pets allowed

Garden Flat with Beach Access

Region: Languedoc | La Grande Motte

Sleeps: 4 **Bedrooms:** 1

Location



Montpellier airport: 17km

Golf de La Grande Motte: 2km

Nearest restaurant: 500m

Nearest bar/pub: 500m

Montpellier centre: 20km

Beach: on your doorstep!

Very close to the local restaurants bars and different grocery stores,
fisherman, butcher, 2 very good bakeries etc

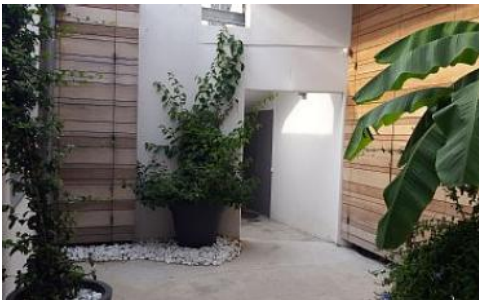
The golf of La Grande Motte is just behind the apartment, 6 minutes by car or
25 minutes of a lovely walk along the canal

Garden Flat with Beach Access

Region: Languedoc | La Grande Motte

Sleeps: 4 Bedrooms: 1

Photos



Garden Flat with Beach Access

Region: Languedoc | La Grande Motte

Sleeps: 4 **Bedrooms:** 1

