

# Exotic Villa

**Region:** Languedoc

**Sleeps:** 10 **Bedrooms:** 4

---



## Overview

Built with a distinct Indonesian architectural influence, this villa is nestled on top of a hill among tall pine trees and benefits from beautiful views over the countryside and the famous Pic Saint Loup mountain. Beautiful saltwater infinity pool. Tiled hammam and chromotherapy bath. Air conditioning and floor cooling system. A simply gorgeous place to spend your holidays.

## Description

Built with a distinct Indonesian architectural style, this villa is nestled on top of a hill among tall pine trees and benefits from a beautiful view over the countryside and the famous Pic Saint Loup mountain.

Located in a nice village just a few miles north of Montpellier. Easy drive or busride into central Montpellier. Easy access to beaches or High Languedoc National Park. Very well located.

It is surrounded by several deck terraces flanking a beautiful infinity pool of 11m x 6m and boasts a large landscaped Mediterranean garden.

Nature is also part of the inside architecture of the house as it embraces several enclosed gardens with large bay windows that flood the house with light.

Airconditioning on the first floor and Floor cooling system on the ground floor

### Outside

Salt water swimming pool 11 x 6 meters with alarm system

Large Terrace with dining area and sitting area

Parking spaces for a few cars

### Facilities

Hamam • indoor bicycle and treadmill • Very well equipped kitchen • Large fridge freezer • Nespresso coffee machine • Toaster • Kettle • Plancha • Washing Machine • Tumble dryer • Dishwasher • Iron board • Bathroom towels radiators • Hairdryers • Satellite TV with Canal+ Canal sat and in sitting room •

Private parking for a few cars • ample sun deck lounge chairs

# Exotic Villa

**Region:** Languedoc

**Sleeps:** 10 **Bedrooms:** 4

---

## Layout

Upper Ground Floor  
Spacious glass hallway  
Large open living room  
Separate dining area  
Fully equipped modern kitchen  
Master bedroom with extra large bed, en suite bathroom, dressing room and private terrace  
Double bedroom with ensuite shower room  
Double bedroom  
Double bedroom  
Separate bathroom  
Hamman  
First floor  
Large 45m<sup>2</sup> open space with library, office and seating area  
Family TV room

## More Info

Extending over 300 square meters and two floors, the house is composed of a main entrance leading through a long glass corridor to a very spacious living room. This overlooks the garden and pool through long bay windows which open all the way in order to create one unique harmonious inside and outside space. The imposing open kitchen with central island is fitted with the best equipment to suit the most demanding chefs. The separate dining area is at the back of the living room in a more cosy space and opens onto a private indoor garden. A corridor leads to the bedroom area. The master bedroom with a 180x200 size bed (super king) and large bay windows with private terrace leading to the garden, the ensuite bathroom with chromotherapy bath and walk-in shower overlooking another indoor garden. Separate tiled hammam with shower. 3 other double bedrooms with 140x200 size beds with bay windows, each directly leading to a private terrace and on to the garden, 2 of which have an ensuite shower room. One family bathroom with bath and shower overlooking an indoor garden.

There are two sets of stairs leading to the first floor loft, either from the bedroom corridor or from the living room. Both are open stairs with no handrail (not suited for young children).

First floor has a large 45m<sup>2</sup> open space furnished with comfortable sofas, a library, office area, large flat screen TV, an indoor bicycle and treadmill, this room could accommodate two more people on sofa beds. Another separate TV room with comfortable sofas and balustrade overlooking the living room.

## Features

- Aircon
- Internet
- Satellite TV
- Easy walk to shops (<15 mins)
- Private pool
- Private parking
- Secure parking
- Barbecue
- Terrace
- Wellness facilities
- No pets allowed
- Spacious garden

# Exotic Villa

**Region:** Languedoc

**Sleeps:** 10 **Bedrooms:** 4

---

## Location



Exotic Villa is in St Clément de Rivière, just 10 miles north of central Montpellier.

Amenities

Just 10 minutes drive to Montpellier city center

20 minutes walk to the nearest shopping area

By car: 20 minutes to the beach

20 minutes to Montpellier airport

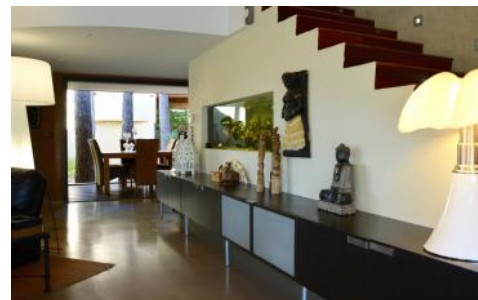


# Exotic Villa

**Region:** Languedoc

**Sleeps:** 10 **Bedrooms:** 4

## Photos



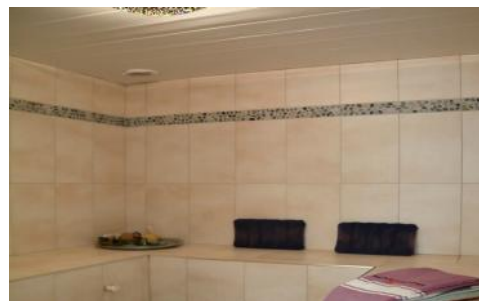


# Exotic Villa

**Region:** Languedoc

**Sleeps:** 10 **Bedrooms:** 4

---



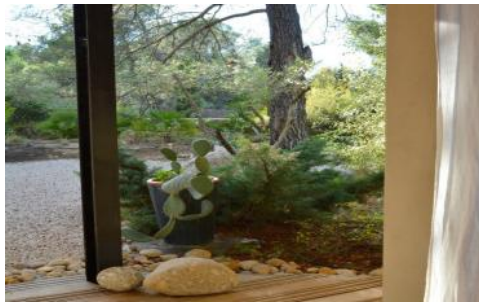
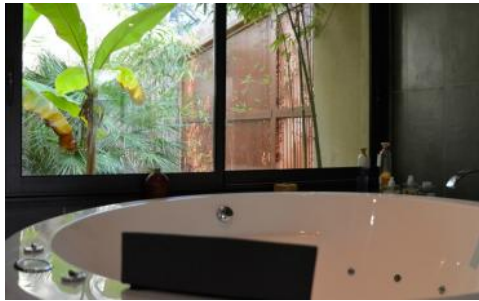


# Exotic Villa

Region: Languedoc

Sleeps: 10 Bedrooms: 4

---



# Exotic Villa

**Region:** Languedoc

**Sleeps:** 10 **Bedrooms:** 4

---

