

# Manoir de Sarlat

**Region:** Dordogne & Lot

**Sleeps:** 14 **Bedrooms:** 7



## Overview

Magnificent Manor House dating from the 17th century full of character and elegance after careful and tasteful renovation. Located less than 10 minutes drive from Sarlat – the pearl of the Dordogne - with its picturesque cobbled-stoned streets, ancient houses and lively Saturday market. The house is in a quiet countryside setting of 10 hectares where you can spot deer and eagles. A wonderful place to relax and an ideal base for exploring the Dordogne and Vézère Valleys. 7 bedrooms/7 bathrooms. Fantastic opportunity for friends to meet up, or to holiday with multi-generational family etc. Child-friendly and suitable for the elderly.

Changeover days - Saturday

## Description

Le Manoir de Sarlat is a magnificent Manor House dating from the 17th century, full of character and elegance after careful and tasteful renovation. The house formerly belonged to Chateau de Beynac and is located less than 10 minutes drive from Sarlat – the pearl of the Dordogne - with its picturesque cobbled-stoned streets, ancient houses and lively Saturday market. Yet, the house is in a quiet countryside setting surrounded by its own 10 hectares of land where you can spot deers and eagles. A wonderful place to relax and an ideal base for exploring the Dordogne and Vézère Valleys.

The spacious house can accommodate up to 14 people and is exquisitely furnished throughout with Asian antique furniture and arts and crafts which present a fascinating mixture of rustic countryside ambience with sophisticated luxury. There is a large heated swimming pool on the grounds, measuring 12 x 6 m, and plenty of nice hardwood garden furniture and sun loungers from which to enjoy the beautiful pool area.

Activities nearby: Canoeing, Cycling, Fishing, Horse riding, Rock climbing, Walking, Sightseeing, Swimming.

Just a 5 min drive from Sarlat Village and still in a very quiet rural location. Sarlat has a wonderful Saturday market, plenty of great restaurants and local shops to sample the specialties of the region. It is a great base for exploring all the market towns around Dordogne of which Sarlat is considered "the gem".

Dordogne and Vézère Valleys: The valleys around the Dordogne and Vézère rivers are a paradise for visitors of all kinds: it is a haven for culture lovers as the valleys are dotted with hilltop castles and pre-historic caves. Gourmands love it too since Perigord has some of the finest dining and wining in France and also there is plenty to do for those of you enjoying an active holiday with canoeing, kayaking, fishing, rock climbing, horse riding or cycling.

There is a large salon/living room - (100m<sup>2</sup>) with wooden beamed ceiling and two grand open stone fireplaces – one at each end of the room. The room has three comfortable sitting groups and a piano which is at the musical guests' disposal.

An oak staircase will take you to the upper floor where you will find three bedrooms, all with beamed ceilings:

'Arabian Nights' - a bedroom in yellow and gold that features a double bed (180 cm), a sitting group and stairs leading up to the spacious bathroom with an antique toilet-table and its own Jacuzzi.

'The Pink Pasha's Retreat' - a cozy French country-style room in pastel colours with a 140 cm double bed, its own en suite WC and shower cabin.

# Manoir de Sarlat

**Region:** Dordogne & Lot

**Sleeps:** 14 **Bedrooms:** 7

---

'The Dream of the Red Mansion' - a stylish bedroom decorated with Chinese antique furniture and arts and crafts with a double bed (180 cm) and en suite spacious bathroom with WC, bathtub, and two basins and lovely views over the grounds.

On the other hand, if you take the teak staircase down from the living room you end up in:

The billiards room - which features an art gallery with Vietnamese oil-paintings, a full-size pool table and a darts board. Here you will also find Bedroom 4.

'The Bedouin's Bungalow' - a spacious, cozy bedroom with two twin beds (100 cm each) and a large Chinese antique sofa that can be made into a third canopy-style bed. The room has its own en suite WC and bathtub and its own entrance from the garden.

If you turn left as you enter the house's entree, you will come into:

The dining room - which has a beamed ceiling, a large open stone fire place and a rustic wooden dining table that can seat 12 people. This room has windows and doors on each side, one leading out to a large barbecue terrace where you can catch the afternoon and evening sun. The dining room also has doors leading to the kitchen.

A large country-style kitchen - with all modern equipment: gas stove that also has an electric heating plate, electric oven, microwave oven, two dishwashers, fridge and freezer with ice-making machine and plenty of 'workspace' to prepare and cook the delicacies of the region.

From the dining room there is also a stair taking you to two more bedrooms:

The Jade Palace - in gentle green colours, beamed ceiling, a 160cm double canopy bed and a spacious bathroom in what is the 'tower' of the manor. The bathroom has hand painted wash basins and WC and features its own Jacuzzi.

Ming Dynasty - a bedroom in light blue tones with 2 single beds (120cm and 100cm) decorated with blue and white China, antique paintings and a bathroom with its own bathtub and hand-painted wash basin and WC.

If you go through the dining room and past the kitchen you will enter the private suite called

'The Sultan's Suite' - The Sultan's Suite consists of a private library style salon with a sit-group, TV with satellite, and an open fireplace. The bedroom has a 160 cm Spanish four-poster double bed, country-style Laura Ashley wallpaper and en suite spacious bathroom with a large bathtub, separate WC and walk-in wardrobe.

# Manoir de Sarlat

**Region:** Dordogne & Lot

**Sleeps:** 14 **Bedrooms:** 7

---

## Layout

Bedrooms - To sleep 14 + 1 extra.

5 double bedrooms

2 twin bedrooms

1 additional bedroom

'Arabian Nights' - a bedroom in yellow and gold that features a double bed (180 cm), a sitting group and stairs leading up to the spacious bathroom with an antique toilet-table and its own Jacuzzi.

'The Pink Pasha's Retreat' - a cozy French country-style room in pastel colours with a 140 cm double bed, its own en suite WC and shower cabin.

'The Dream of the Red Mansion' - a stylish bedroom decorated with Chinese antique furniture and arts and crafts with a double bed (180 cm) and en suite spacious bathroom with WC, bathtub, and two basins and lovely views over the grounds.

On the other hand, if you take the teak staircase down from the living room you end up in:

The billiards room - which features an art gallery with Vietnamese oil-paintings, a full-size pool table and a darts board. Here you will also find Bedroom 4.

'The Bedouin's Bungalow' - a spacious, cozy bedroom with two twin beds (100 cm each) and a large Chinese antique sofa that can be made into a third canopy-style bed. The room has its own en suite WC and bathtub and its own entrance from the garden.

If you turn left as you enter the house's entree, you will come into:

The dining room - which has a beamed ceiling, a large open stone fire place and a rustic wooden dining table that

## More Info

There is a large heated swimming pool on the grounds, measuring 12 x 6 m, and plenty of nice hardwood garden furniture and sun loungers from which to enjoy the beautiful pool area.

Suitability : Suitable for children, Suitable for the elderly, Non-smoking, Touring motorcyclists welcome

Kitchen facilities : Dishwasher, Freezer, Fridge, Cooker, Ironing facilities, Microwave, Tumble dryer, Washing machine, Gas hob, Electric hob, Electric oven, Fridge-Freezer

Internal facilities : Central heating (electric), English satellite TV, Exclusive rental, Internet access (broadband), Telephone, TV, VCR, Weekly maid service, Wood burning fire or stove, Fans in rooms, Wi-Fi Broadband Internet, Piano, Tea/Coffee making facilities

External facilities : Garden, Scenic views, Swimming pool (exclusive use), Barbecue, Heated Pool

## Features

- Internet
- Satellite TV
- Un-overlooked pool
- Suitable for reduced mobility
- Private pool
- Heatable pool
- Heating
- Private parking
- Secure parking
- Family friendly
- Barbecue
- Terrace
- Games Room
- Spacious garden

# Manoir de Sarlat

**Region:** Dordogne & Lot

**Sleeps:** 14 **Bedrooms:** 7

---

can seat 12 people. This room has windows and doors on each side, one leading out to a large barbecue terrace where you can catch the afternoon and evening sun. The dining room also has doors leading to the kitchen.

A large country-style kitchen - with all modern equipment: gas stove that also has an electric heating plate, electric oven, microwave oven, two dishwashers, fridge and freezer with ice-making machine and plenty of 'workspace' to prepare and cook the delicacies of the region.

From the dining room there is also a stair taking you to two more bedrooms:

'The Jade Palace' - in gentle green colours, beamed ceiling, a 160cm double canopy bed and a spacious bathroom in what is the 'tower' of the manor. The bathroom has hand painted wash basins and WC and features its own Jacuzzi.

'Ming Dynasty' - a bedroom in light blue tones with 2 single beds (120cm and 100cm) decorated with blue and white China, antique paintings and a bathroom with its own bathtub and hand-painted wash basin and WC.

If you go through the dining room and past the kitchen you will enter the private suite called 'The Sultan's Suite' - The Sultan's Suite consists of a private library style salon with a sit-group, TV with satellite, and an open fireplace. The bedroom has a 160 cm Spanish four-poster double bed, country-style Laura Ashley wallpaper and en suite spacious bathroom with a large bathtub, separate WC and walk-in wardrobe.

# Manoir de Sarlat

**Region:** Dordogne & Lot

**Sleeps:** 14 **Bedrooms:** 7

## Location

The nearest airport is Bergerac which is a bit more than an hour away. It takes almost exactly two hours to drive to Toulouse airport. If you want to get closer to the house you can take the train from Toulouse to either Souillac or take the bus from Souillac to go to Sarlat. There are also trains between Bordeaux and Sarlat (sometimes need to change trains in Libourne)

### NEAREST AIRPORT

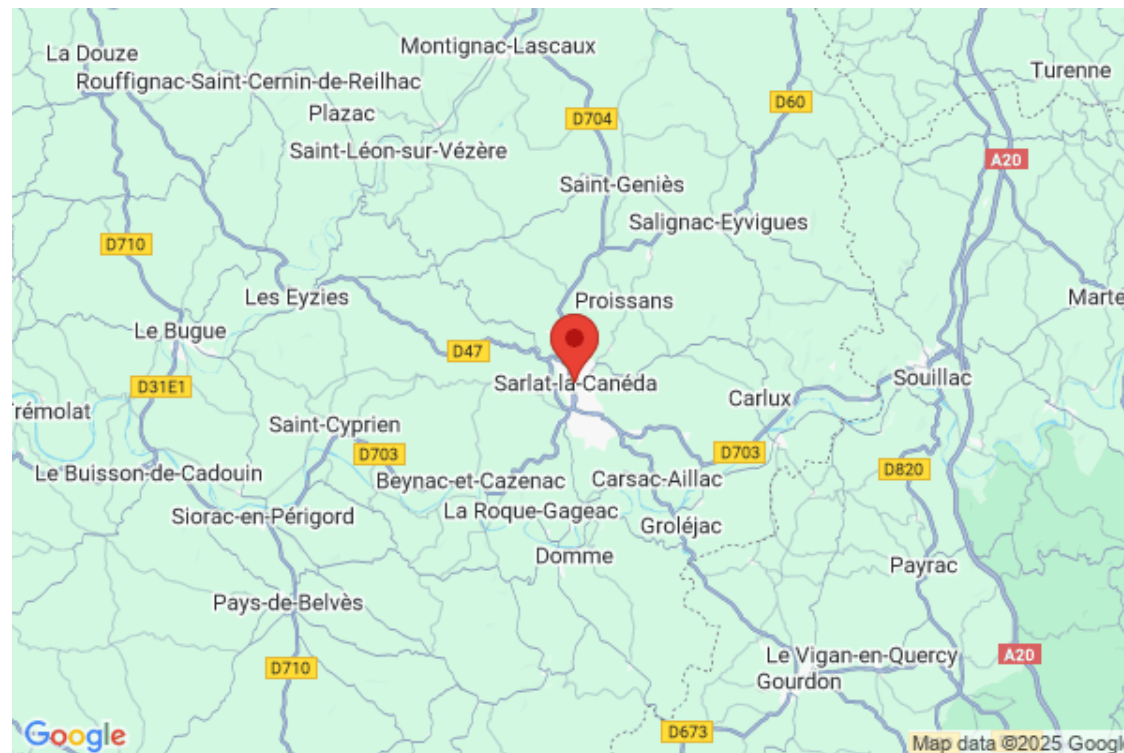
The nearest serviceable airport is Brive Souillac [BVE]

### TOWNS AND VILLAGES

Sarlat (4 kms) - Nestling in a small valley between the Dordogne and Vézère rivers, Sarlat is considered the "gem" of Dordogne with its amazingly beautiful golden-stone houses and ancient roofs along its medieval, cobbled stone streets. Sarlat is the European town offering the greatest number of Historical Monuments per square kilometre and has often been used for film settings. In addition to its cultural heritage, this part of Perigord offers among the finest gastronomy in France. Boutiques are filled with truffle, foie gras (goose liver), confits de Canard, pates and other delicatessen. A good time to sample the tastes and smells of these famous produce of the region is at its lively Saturday market where you can also buy other items from the region such as handicrafts, textiles, antiques or just a souvenir.

La Roque-Gageac (15 kms) - Huddled beneath a towering gray cliff, this village of tan stone houses, is just on the right bank of one of the hairpin curves in the Dordogne River. It is one of the best-restored villages in the Dordogne Valley and is very popular with artists trying to catch its beauty. Craft shops line its low, narrow streets, dominated by the outlines of the 19th-century mock-medieval Chateau de Malartrie and the Manoir de Tarde, with its cylincrical turret. You will also find a number of cave dwellings knows as the Fort Troglodyte.

Beynac (11 kms) - Beynac is most famous for its impressive Château that you can see already from afar as it is located high on the top of a cliff above the Dordogne river. This was once one of the greatest Perigord strongholds, dominating a strategic bend in the Dordogne and rivaling the fortress at Castelnaud on the other bank of the river. In the village, there is a small



# Manoir de Sarlat

**Region:** Dordogne & Lot

**Sleeps:** 14 **Bedrooms:** 7

---

folklore museum and, behind the castle, an open-air "Parc Archaelolgique" containing a series of reconstructed Neolithic dwellings and tools. Also, the neighbouring hilltop hamlet of Cazenac is worth a visit for its Gothic church and exceptional views.

Domme (14 kms) - Set on a steep promontory high above the Dordogne River, the trapezoid-shaped walled village of Domme is one of the few bastides to have retained most of its 13th century ramparts, including three fortified gates. There is a stunning panorama of the Dordogne River from the cliff-side 'Esplanade du Belvedere' and the adjacent 'Promenade de la Barre', which stretches west along the forested slope to the 'Jardin Public'. There is also a Musem (Musée d'Arts et Traditions Populaires) which has nine room of clothing, toys, tools etc from the past. Just west of Domme is the village of Cénac which offers a number of outdoor activities such as year-round canoe and kayak trips and rent of bicycles.

Les Eyzies-de-Tayac (16 km) - This is the centre of the area where many signs of prehistoric man have been discovered. A number of excavated caves and grottoes, some with wall paintings, are open for public viewing. At the Musee Nationale de Prehistoire, you can examine many artifacts and get ideas about excavation sights to visit in the region. 10 km away is Chateau de Camarque which is situated in a picturesque valley.

Bergerac (60 km) - Bergerac is a quiet town with ancient half-timber houses and narrow alleys. Famous for its wine you can find many wine shops in town offering free tastings and you can also find many vineyards around Bergerac that would welcome you to taste their wine and show you around their facilities. Not only are there vineyards in the region, but there are also tobacco plantations. You can learn more about this local industry at Musee du Tabac.

CAVES AND PRE-HISTORIC SITES

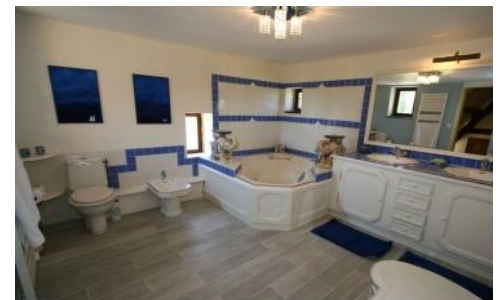
Lascaux Caves

# Manoir de Sarlat

**Region:** Dordogne & Lot

**Sleeps:** 14 **Bedrooms:** 7

## Photos



# Manoir de Sarlat

**Region:** Dordogne & Lot

**Sleeps:** 14 **Bedrooms:** 7

---

