

Chateau de Belcaire

Region: Languedoc

Sleeps: 16 **Bedrooms:** 8 **Bathrooms:** 6



Overview

Dating back to at least the 16th century, this delightful chateau offers the best of all worlds. Tranquility, yet set within a village and with stunning countryside and interesting historical towns nearby. An ancient building which offers all creature comforts: if you are looking for a holiday in La Belle France but wish to keep your distance from the busy coastal areas then this lovely venue fits the bill. A great location for a large family group or activity-based groups (walking, cycling etc). 8 bedrooms/6 en-suite bathrooms.

Description

This ancient chateau has something to offer everyone. Located in the old village of Belcaire on the Plateau de Sault you will find the peace and tranquility you have been craving - but without completely losing touch with civilisation! The building dates back to the 16th century but feels extremely comfortable and homely with all 21st century creature comforts around you.

The village itself has a fully-stocked épicerie, a sandwich shop, a boulangerie just 100m from your front door and a very good butcher's shop. There are several nearby farms which sell locally-grown, seasonal fruit and vegetables so all your catering requirements are easily taken care of.

Belcaire and the close by villages of Roquefeuil and Espezel offer a selection of authentic restaurants and bars to choose from.

There is a great choice of activities on offer in the surrounding area. Ax-les-Thermes is a famous spa town boasting alpine walks, a wellness spa, natural springs, skiing and much more. You can do duty-free shopping in Andorra. Other interesting things to try are mule trekking in the mountains, Go-karting near Mirepoix, the Museum of the Maquis (the French Resistance was very active in the area), and the famous Cathar castles. There is also Parapente available locally and if you appreciate botany then you will be pleased to learn there are dozens of rare orchids to be discovered on the plateau. Of course, being in the foothills of the Pyrenees there is fantastic walking available at all ability levels. Cycling is also popular in the region and you will find four working bicycles in the barn. There is a choice of flat or challenging mountain biking. Walk down to the lake at the end of the village to find tennis courts and pedalos etc. to hire: walk 100m in the other direction and you'll find an international standard indoor climbing hall with complex walls, as well as extensive bouldering options - if you prefer the real thing, then there is a vast natural granite climbing wall within 20 minutes' walk. The old city of Limoux, whose famous sparkling wines rival those of Champagne, is about 45 minutes away.

The Mediterranean coast is 1.5 hours away so a day at the beach could be included in your holiday itinerary.

There is a very large, dry barn separate from the main house. Suitable for children to hang out in and play table tennis, badminton etc. There are electrical points in the barn, complete with fairy lights, giving the option to transform into an exciting party space (please contact to discuss this in further detail).

The chateau offers 6 en-suite double bedrooms, all providing either king-sized or super-king-sized beds. There are 2 other bedrooms, each with 3 single beds. All the bedrooms are extremely spacious and light-

Chateau de Belcaire

Region: Languedoc

Sleeps: 16 **Bedrooms:** 8 **Bathrooms:** 6

filled. Each bedroom/bathroom is equipped with hair dryer and kettle.

Enter through the imposing entrance hall under a keystone dated 1595. To your left is the comfortable, extensive salon with armchairs and sofas around the log fire. For music lovers there is also a grand piano.

To your right is the dining room with seating for 16. Just off the dining room is 'the snug', a quiet spot with flat-screen TV for catching up on the news in the world outside or watching a movie; also the perfect space to keep little ones entertained. Throughout the house you will find delightful period furniture which enhances the ambience of the property. Please note that the furniture, although antique, is in good condition. The dining room leads to the very well-equipped kitchen with double gas hob and electric oven and on to the huge utility room. This house is extremely well set-up for large groups so you will find multiple coffee machines and two fridge/freezers alongside a washing machine and tumble drier.

There are two WCs on the ground floor.

Bathed in sunlight is the delightful south-facing terrace in front of the main entrance, just right for al fresco dining. There is a covered terrace overlooking the pool with seating for up to 16. This is your go-to spot when the sun is beating down; a constructed barbecue is available for all budding chefs!

All bedrooms are upstairs and each one has its own built-in wardrobe. Access to upper floors is via a grand wooden staircase.

All the bedrooms have either carpeting or traditional wooden floors with rugs.

Outside: There are spacious lawns and gardens which are not overlooked, planted with Mediterranean and mountain trees and shrubs. There are various shaded seats around the garden. There is a private pool with 'abri' cover and loungers for all guests.

Chateau de Belcaire

Region: Languedoc

Sleeps: 16 **Bedrooms:** 8 **Bathrooms:** 6

Layout

First Floor:

Bedroom 1: King-size with en-suite bathroom offering bath, sink and WC. interconnects with bedroom 2, making this a superb family suite.

Bedroom 2: 3 x single beds

Bedroom 3: Super king-size. View over terrace. En-suite bathroom with bath and shower over, double sink, WC.

Bedroom 4: King -size. En-suite bathroom with bath, sink and WC.

Second Floor:

Bedroom 5: King-size with en-suite bathroom offering bath, sink and WC. interconnects with Bedroom 6, offering a second superb family suite.

Bedroom 6: 3 x single beds.

Bedroom 7: Master bedroom. Two built-in wardrobes. En-suite bathroom with bath and shower over, double sink, WC.

Bedroom 8: King-size. En-suite bathroom with bath, sink and WC.

For young families, 2 cots, 1 highchair and a baby changing unit available.

More Info

Easy, secure parking.

Good WiFi throughout.

Swimming pool has its own cover that can be pulled over for children's security and to retain the warmth of the water. Chlorine. 10m x 4m with Roman steps.

There is a low wall beside the front terrace with a steep drop on the other side so take care with small children!

Family groups preferred or activity groups - cycling, walking clubs etc.

For winter lets please contact SFHV direct.

Features

- Internet
- Table tennis
- Easy walk to shops (<15 mins)
- Un-overlooked pool
- Pets allowed on request
- Private pool
- Heating
- Private parking
- Secure parking
- Family friendly
- Barbecue
- Terrace
- Games Room
- Fireplace
- Spacious garden
- Event Venue
- i-Rent

Chateau de Belcaire

Region: Languedoc

Sleeps: 16 **Bedrooms:** 8 **Bathrooms:** 6

Location

The village of Belcaire is on the Plateau de Sault. Here, you are in the Department of the Aude (more usually associated with the Aude delta, Narbonne and the Mediterranean coast) but in the foothills of the Pyrenees. Consequently you are surrounded by breathtaking views.

The nearest airports are Carcassonne (1.5 hours), Perpignan (1.5 hours) or Toulouse (1.5 hours).

Before arriving at Belcaire, consider stopping in Limoux to taste and buy the famous Blanquette and Crémant de Limoux - just as good as champagne but a fraction of the price.

Ax-les-Thermes is 35 minutes away; a good destination for restaurants etc. and the spa.

Belcaire is a village with a swimming lake, hotel, pizza restaurant, children's play area, tennis courts, climbing wall, boulodrome, butcher, baker, Super-U etc. There is a doctor and vet. It is at 1000m and has good walking and cycling on the doorstep with canoeing and rafting at Quillan 25 minutes away. The plateau has lots of orchids etc.

Shopping:

Tax-free goods, including food and drink are available in Andorra, about 45 km (about 1 hour drive) to the South. Do not forget to take your passports and beware the road can get very busy at the border at peak times.

Otherwise, Carrefour and Aldi are in Lavalanet. Carrefour is in Quillan. Bigger supermarkets also at Limoux and Pamiers.

Markets:

The first and largest and one of the best markets of the week is in Esperaza, North of Quillan on a Sunday morning.

The most popular market for visitors to the region is in Mirepoix on Monday. The diverse and extensive market is in the centre of this beautiful bastide town.

Quillan - Wednesday and Saturday

Lavalanet - Friday

Ax-les-Thermes - Tuesday and Saturday

In Belcaire there is the lake and many walks directly from the house. There is a folder of suggested walks in the house. The walk up to the viewpoint from



Chateau de Belcaire

Region: Languedoc

Sleeps: 16 **Bedrooms:** 8 **Bathrooms:** 6

the lake is not too arduous and rewards you with a great panorama. There are tennis courts, children's play equipment, boules, pedalos, paddle boarding and other activities at the lake.

Mirepoix is a pretty wooden bastide town, well worth a visit.

There are Cathar castles steeped in rich history all around and within easy driving distance. The castle at Foix is dramatic and the town interesting.

Rennes-Le-Chateau is just North of Quillan and has a famously mysterious history, featured in books such as 'The Da Vinci Code'.

Limoux is a pretty, small town with a delightful square, famous wine and a range of dining options.

Carcassonne is just over an hour's drive away.

There are gorges on the Aude between Quillan and Axat. The drive to Axat from Belcaire is pretty through a narrow gorge. The nearby Gorge du Frau is a dramatic walk.

Canoeing and white water rafting on the Aude at Quillan.

Slightly further afield there is the Lac de Montbel with water activities.

There is horse riding and pony trekking locally.

The Tour de France goes through the area in the middle of July.

There is a go-karting track on the road between Lavelanet and Mirepoix

Chateau de Belcaire

Region: Languedoc

Sleeps: 16 Bedrooms: 8 Bathrooms: 6

Photos



Portal



Games/party barn



Front door



Hall



Hall

Chateau de Belcaire

Region: Languedoc

Sleeps: 16 Bedrooms: 8 Bathrooms: 6



Breakfast on the covered terrace



Salon



Salon



Salon



Snug



Snug



Dining room



Dining room



Second floor landing



Second floor landing



Bedroom 7



Bathroom 7

Chateau de Belcaire

Region: Languedoc

Sleeps: 16 Bedrooms: 8 Bathrooms: 6



Bathroom 7



Bathroom 7



Bedroom 3



First floor landing



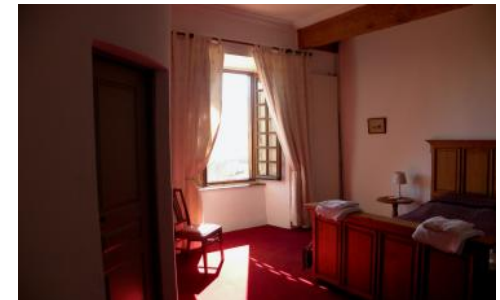
Bedroom 2



Bedroom 1



Bedroom 4



Second floor landing



Bedroom 2



Chateau de Belcaire

Region: Languedoc

Sleeps: 16 **Bedrooms:** 8 **Bathrooms:** 6



Bedroom 8



Bedroom 6



Bedroom 6



Second floor landing



Second floor landing



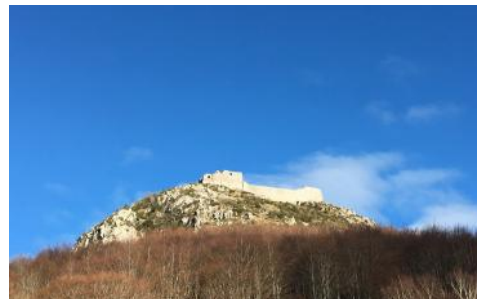
First floor landing



Barn



Lake in village



Montsegur castle



Puivert castle

