

Fisherman's Wharf

Region: Cote d'Azur | Port Grimaud

Sleeps: 8 **Bedrooms:** 4 **Bathrooms:** 2



Overview

Newly refurbished Fisherman's house with 14-metre berth in quiet but central road in Port Grimaud 1. The house has a front courtyard and rear terrace looking out over one of the main canals. Short walk to the beach. 4 bedrooms/2 bathrooms.

Description

This spacious and light 4-bedroomed house has recently been redecorated. It has a good -front courtyard with outside dining, good for enjoying breakfast, lunch or sunbathing.

The ground floor is open plan and on entry there is a fully equipped kitchen with dishwasher, oven, gas hob, fridge/freezer and storage cupboards, leading onto dining (can seat 6 guests), large comfortable sofa for relaxing, leading out onto the rear terrace with outside dining overlooking the main canal.

The house has WIFI/Internet (Fibre) and a 43" Smart television with Apple TV.

On the first floor there are 2 bedrooms one a large double (with balcony and seating area overlooking the canal) and the other a double, there is a shower room and separate wc.

On the second floor there is a double bedroom with balcony (with seating) overlooking the canal and twin room bedroom with shower room and wc.

The house sits in a quiet cul-de-sac (with no through traffic) behind the main Square of Port Grimaud with its shops, cafés and restaurants. You are also a 2 minutes walk from the Navette that takes you into St Tropez.

Port Grimaud has a secure and controlled entry for vehicles, making it safe for all and ensuring there is not much traffic. There are also residents' boats which allow you to travel throughout Port Grimaud. Here you are close to the market square where there a Provencal Market twice per week.

From the house you are less than 10 minutes walk to the beach where there are plenty of water sport activities and it is also possible to hire a RIB for your stay.

Fisherman's Wharf

Region: Cote d'Azur | Port Grimaud

Sleeps: 8 **Bedrooms:** 4 **Bathrooms:** 2

Layout

4 bedrooms:

First Floor:

1 x double with balcony

1 x double

Shower room and separate WC

Second Floor:

1 double with balcony

1 x twin room

Shower room and separate WC

More Info

Outside dining

Berth: 14m x 4.2m

Newly refurbished

Quiet location (close to main Square)

Private car parking opposite Port Grimaud 1 sector. Setting down area outside property for unloading the car etc but cars have to be parked in car park zone.

Short walk to beach

Features

- Internet
- Satellite TV
- Easy walk to beach (<15 mins)
- Easy walk to shops (<15 mins)
- Heating
- Golf nearby
- Watersports nearby
- Family friendly
- Terrace

Fisherman's Wharf

Region: Cote d'Azur | Port Grimaud

Sleeps: 8 **Bedrooms:** 4 **Bathrooms:** 2

Location

Port Grimaud Centre - 50 metres

Port Grimaud Beach - 400 metres

St Tropez Ferry - 50 metres

Grimaud Village - 5 kms

St Tropez - 8 kms

Nice Airport - 98 kms

A8 Motorway - 27 kms

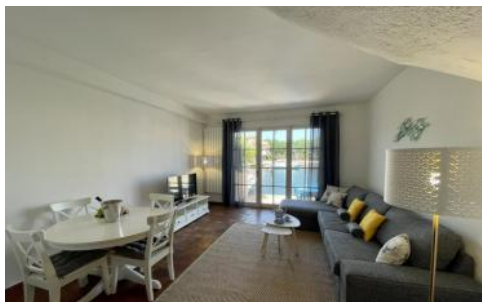


Fisherman's Wharf

Region: Cote d'Azur | Port Grimaud

Sleeps: 8 Bedrooms: 4 Bathrooms: 2

Photos



Fisherman's Wharf

Region: Cote d'Azur | Port Grimaud

Sleeps: 8 Bedrooms: 4 Bathrooms: 2

