

St Tropez Dream

Region: Cote d'Azur

Sleeps: 4 **Bedrooms:** 1



Overview

Charming one-bedroomed apartment, walking distance to shops and restaurants. 10 minutes to beaches. Pretty outdoor terrace, garden, beautiful views across village roof tops and the Maures mountains. Close to the Gulf of St. Tropez, with large shared and gated swimming pool, children's paddling pool, tennis court and boules court. Fantastic for families.

Description

This is a charming one-bedroomed apartment with pretty outdoor terrace and garden. Beautiful views across village roof tops and the Maures mountains.

Situated in a private residential Domaine at the heart of a Provencal village close to the Gulf of St. Tropez, with large shared swimming pool, children's paddling pool, tennis court and boules court. Absolutely fantastic for kids and families.

The apartment is a haven of tranquillity, situated at the heart of the Provencal village, Plan de la Tour, away from the hustle and bustle of tourists. (It is a half hour boat ride from St Tropez).

One bedroom with double bed and French doors opening onto the terrace.

Living room with sofa, desk, as well as two single beds so accommodation would suit a couple and two children. Situated on the ground floor, the apartment has its own private access. The two single beds would suit children or small adults. The owner has slept in them comfortably and she is 5ft 4"!

Bathroom with large bath/ shower over, hand basin, towel rail, washing machine. Separate toilet.

Small American kitchen adjoining sitting room with 4 hobs and a small fridge.

OUTSIDE

South-facing garden and terrace with outside table and chairs for four.

The cool terrace with sun loungers creates a peaceful environment for rest and relaxation.

The two sun loungers can be in the shade of the terrace or in the sunny garden.

Terrace lights and candles.

St Tropez Dream

Region: Cote d'Azur

Sleeps: 4 **Bedrooms:** 1

Layout

The bedroom with double bed and then two single beds in the sitting room would suit a couple and two children. Situated on the ground floor, the apartment has its own private access from the garden.

Bedroom:

Bedroom with double bed and French doors opening onto the terrace.

Living Room:

Two single beds would suit children or small adults. The owner has slept in them comfortably!

Bathroom:

Bathroom with large bath/ shower over, hand basin, towel rail, washing machine. Separate toilet.

Kitchen:

Small American kitchen adjoining sitting room with 4 hobs and a fridge.

Living Rooms:

Sofa, desk and two single beds.

Linen/maid service:

Bed linen/towels/kitchen linen provided. An additional cost of €60 non-refundable for linens and end of stay cleaning is payable upon arrival.

More Info

Not suitable for people with mobility problems – curved, shallow wooden steps up to the apartment with no hand rail, a ledge at entrance created by the door frame.

Steps up to a hill-top swimming pool (although disabled entrance to pool with no steps by side-door).

Bed linen/towels/kitchen linen provided at extra cost - see Pricing tab.

Designated parking place right next door to the apartment.

Features

- Easy walk to shops (<15 mins)
- Pets allowed on request
- Shared pool
- Secure fenced pool
- Private parking
- Watersports nearby
- Secure parking
- Family friendly
- Terrace
- Spacious garden
- Tennis court

St Tropez Dream

Region: Cote d'Azur

Sleeps: 4 **Bedrooms:** 1

Location



Two minutes walk from the village of Plan de la Tour with boulangeries, restaurants, weekly Thursday market, grocery store and bank cash point machine. Wifi connection is available at the tourist office or at Le Café.

During the Summer, there are frequent open air events such as music, art exhibitions, wine tasting, theatre. Aqualand 10 min drive away. Sea kayak, stand up paddle, horse riding, sailing can be organised on request.

The beaches of Ste Maxime are approximately 6km away by car. Or you can take the morning bus, returning late afternoon.

St Tropez and the beautiful sandy beaches of Pampelonne are approximately 20km.

A village bus goes to Ste. Maxime early morning, lunchtime and early evening.

St. Tropez is a 20-minute boat trip from Ste. Maxime.

Ste. Maxime golf course, 20-minute drive away, lovely sea views, but expensive to play.

Hyerres/Toulon airport approx. 48km. Nice airport approx 93km. Marseille/Marignane airport approx 150km. Car hire recommended or private taxi service available on request.

Grimaud approx 12km. St Tropez approx 20km. Ste Maxime approx 6km.

St Tropez Dream

Region: Cote d'Azur

Sleeps: 4 Bedrooms: 1

Photos



Large swimming pool



Tennis court



Terrace



Private terrace



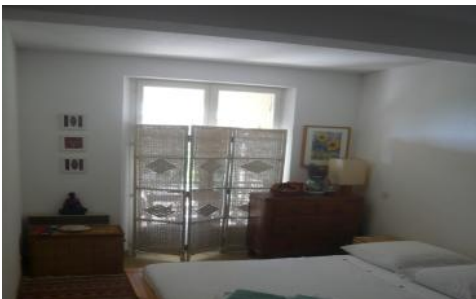
Parking place adjacent with electric point at 25m.



Mini kitchen



Sitting room



Small private garden



View from the hills

St Tropez Dream

Region: Cote d'Azur

Sleeps: 4 **Bedrooms:** 1



View of Les Maures